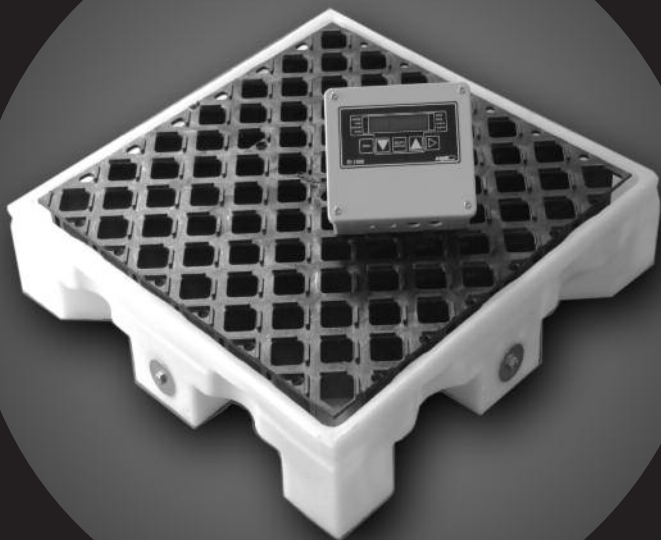


SC1000

Spill Containment Scale



System Features

- Meets EPA 40 CFR 264.175
- Compact design saves floor space
- Integral drum scale w/stainless steel load cells
- Capacity –11 gallons; 66 gallons with rollout bladder
- Low profile for easy drum loading
- Polyethylene construction for optimum corrosion resistance

The SC1000 Spill Containment combines the benefits of a spill containment deck that helps you comply with both EPA Containment Storage Regulation 40 CFR 264.175 and Uniform Fire Code Spill Containment Regulations, and a highly accurate drum weighing system. The system captures spills and leaks up to 66 gallons while the integral *Precision* scale accurately and continuously weighs the contents of the supported tank so that you will have a precise accounting of your chemical inventory.

The main containment sump collects spills up to 11 gallons. If more spillage or a tank failure should occur, a protective “trap door” opens automatically to allow the integral bladder to unfurl increasing the containment capacity to a maximum of 66 gallons.

Weighment is achieved using four (4) integrally mounted, highly corrosion-resistant stainless steel, NTEP-approved, electronic load cells for optimum stability and weighing accuracy. Drum weight can be displayed locally and transmitted to remote instrumentation as necessary. Weight indication and transmission is performed by any of Eagle’s Precision Digital weigh instruments.

Your Source for Precision Process Solutions



SC1000

SC1000

Spill Containment Scale

Containment	
Drum Capacity	One 55 gallon drum, 24" Diameter
Spill Deck Footprint	30 3/8" X 26"
Footprint of deployed bladder *	66" x 50"
Overall height	6"
Material of Construction	Polyethylene
Spill Deck Capacity	11 gallons
Total containment capacity w/bladder extended *	66 gallons
Bladder material	Double-walled Polyethylene
* When ordering specify containment with or without bladder	

Scale	
Load Cells	Four (4) Beam Type
Load cell & hardware material	Stainless Steel
Scale mounting	Integral to spill containment
Scale accuracy	0.1% FS
Maximum capacity	1000 lbs
Safe load	120% of capacity
Connection Cable	15 ft, shielded, PVC jacket
Cell Excitation Req't	10 Vdc
Nominal Output	3 m/V

Accessories & Options

Digital Weigh Indicator/Transmitter

Loading Ramp

Any Eagle Weigh Indicator/Transmitter is suitable for use with the SC1000 Spill Containment Scale. See data sheets for our Model EI-1000/2000S Digital Weigh Indicator. In a multi-scale environment the EI-4000S 4-channel Digital Weigh Indicator Transmitter can also be used.

