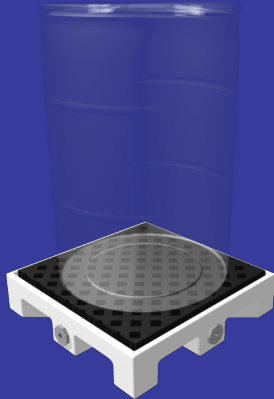


# SC-1000

## Spill Containment Scale



### Features

- Meets EPA 40 CFR 264.175
- Compact design saves space
- Stainless steel load cells
- 11 gallon capacity, 66 with roll out bladder
- Polyethylene base for optimum corrosion resistance

SC-1000

### Description

SC1000 Spill Containment combines the benefits of a spill containment deck that helps you comply with both EPA Containment Storage Regulation 40 CFR 264.175 and Uniform Fire Code Spill Containment Regulations, and a highly accurate drum weighing system. The system captures spills and leaks up to 66 gallons while the integral Precision scale accurately and continuously weighs the contents of the supported tank so that you will have a precise accounting of your chemical inventory.

The main containment sump collects spills up to 11 gallons. If more spillage or a tank failure should occur, a protective “trap door” opens automatically to allow the integral bladder to unfurl increasing the containment capacity to a maximum of 66 gallons.

Weight measurement is achieved using four corrosion resistant stainless steel NTEP approved load cells. Container weight can be displayed local and transmitted to remote instrumentation as necessary using one of Eagle Microsystems EI series electronic indicators.

Your Source for Precision Process Solutions



# SC-1000

## Spill Containment Scale

<b>Specifications</b>	
Containment	
Drum capacity	55 gallons, 24" max diameter
Deck footprint	30 3/8" X 26" X 5"
Footprint with deployed bladder	66" X 58"
Deck material of construction	Polyethylene
Sump capacity / total capacity	11 gal. / 66 gal.
Bladder material	Polyethylene
Scale	
Load cells	Four beam type
Load cell & hardware material	Stainless steel
Scale mounting	Integral to containment
Maximum capacity	1000 lbs. /453 kg
Scale Accuracy	0.1%
Safe load	120% capacity
Connection cable	15' shielded, pvc jacketed
Options	
Loading ramp	
Electronic indicator	
Extra deck for drum storage	

