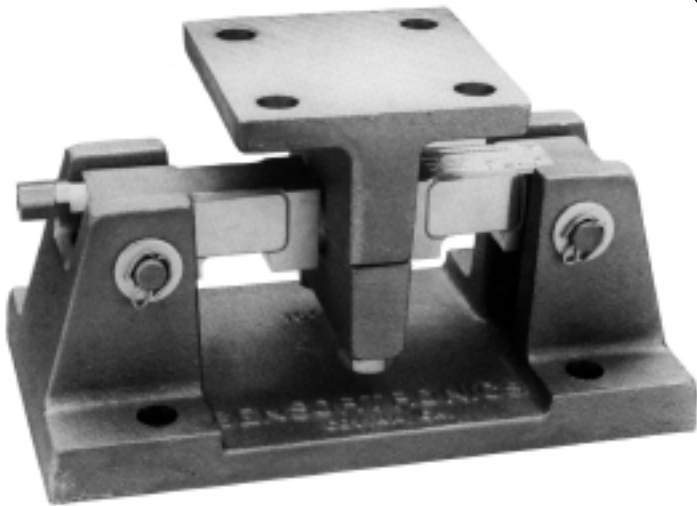


TWA

Tank Weighing Assembly



Features

- Rugged, high-accuracy weighing assembly for large tank & hopper applications
- Rated capacities from 1,000 to 125,000 lbs.
- Heavy duty cast mounting base
- Environmentally sealed, stainless steel, double-ended shear beam load cell
- FM-approved design
- Approved for Zone 4 seismic applications

The Eagle Microsystems Model TWA tank & hopper weighing assemblies are high accuracy devices. The assemblies consist of an electroless nickel-plated Double Ended Shear Beam Load Cell attached to a heavy-duty cast mounting base. The weighing assembly can be bolted directly to the floor and the vessel without requiring extra mounting plates, load buttons or other attachment devices. The Model 65016 double-ended shear beam load cells are Factory Mutual System Approved for use in Class 1, Division 1, Groups A, B, C and D hazardous locations. Tank Weighing Assemblies eliminate the requirement for check rod assemblies and at the same time provide for the thermal growth and contraction of the structure. Also of significant importance is that the Tank Weighing Assemblies are approved for Zone 4 Seismic applications.

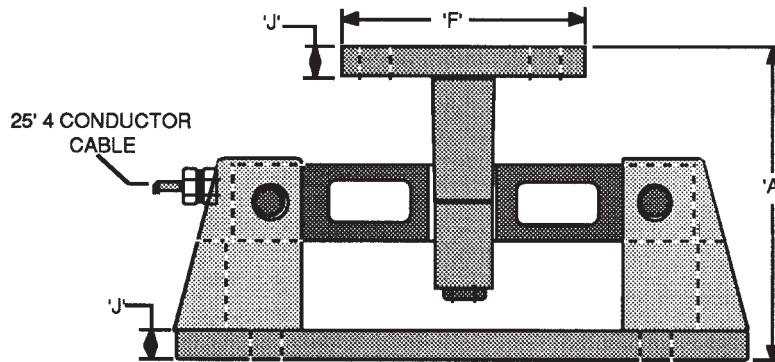
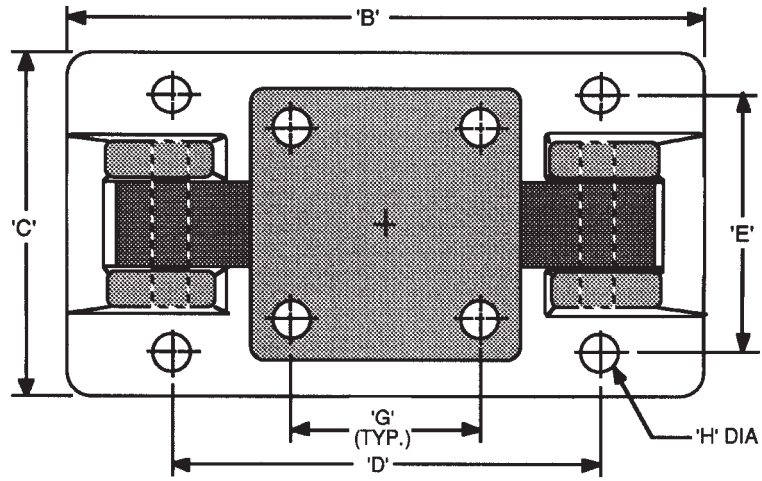
Your Source for Precision Process Solutions



TWA

TWA

Tank Weighing Assembly



Specifications

Accuracy	0.1% of full scale
Rated Capacity	1000 to 125,000 lbs.
Safe Overload Capacity	200% of Rated Capacity
	100% in any direction
Excitation Voltage	15 Vdc
Bridge Resistance	700 Ω
Full Scale Output	3 mV/V \pm 0.25%
Temperature Compensation Range	0 – 150°F

Wiring Code

Black	Excitation Negative (-)
Red	Excitation Positive (+)
Green	Signal (+)
White	Signal (-)
Yellow	Shield

P/N	Capacity	A	B	C	D	E	F	G	H	J
1605	1K – 5K	5.13	9.35	5.00	6.25	3.75	4.00	2.75	0.56	0.50
1605	10K – 25K	7.00	12.00	8.00	7.50	6.00	8.00	6.00	0.78	0.75
1605	50K – 75K	9.30	16.25	12.00	11.50	9.50	9.00	6.50	0.78	1.00
161125	100K – 125K	11.75	23.50	14.00	20.00	12.00	10.00	8.00	1.12	1.50

Model Identification

TWA-xxxxx

Load Cell Capacities

1K, 2.5K, 5K, 10K, 15K, 20K, 25K, 32K, 50K, 75K, 100K & 125K lbs.

