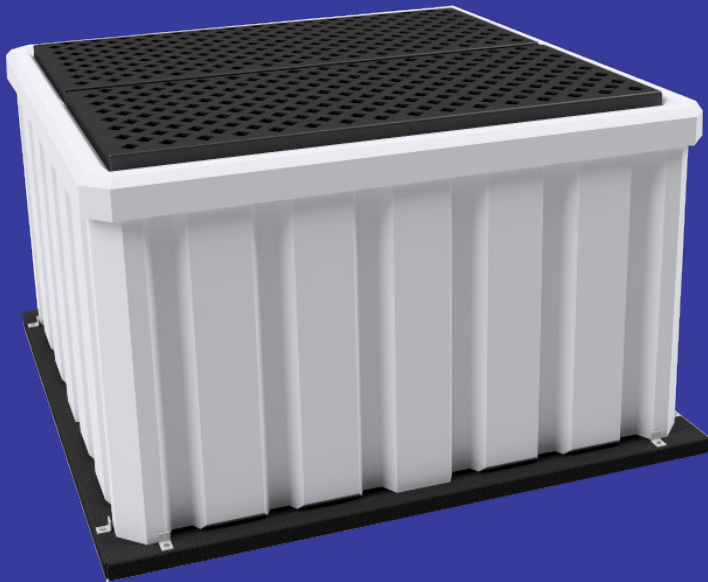


# LP-4300 TSC

## Tote Spill Containment Scale



### Features

- Weighs totes up to 52"X52"
- Capacities up to 8000 lbs.
- Grate allows spills to be contained
- 400 gallon sump
- Accuracy of .1% capacity
- Integrated drain

LP-4300 TSC

### Description

Eagle Microsystems LP-4300 TCS provides an integrated way of containing IBC tote spills and weighing the amount of liquid yet to be fed into any process. The Scale itself uses a four load cell design allowing accurate weight readings regardless of how the tote is positioned on the containment deck. The containment vessel is constructed with translucent white low-density polyethylene, allowing visual inspection for spills of product. The spill containment pallet resists UV degradation, corrosion, and many common chemicals.

An integrated 3/4" drain allows spills to be easily emptied, and the tough 4" thick grating supports the tote while allowing spilled chemical to freely fall into the sump area of the platform.

Your Source for Precision Process Solutions



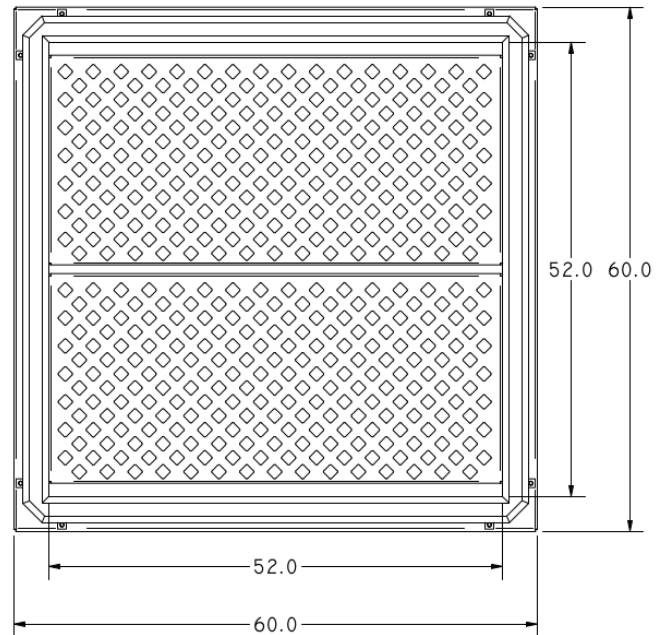
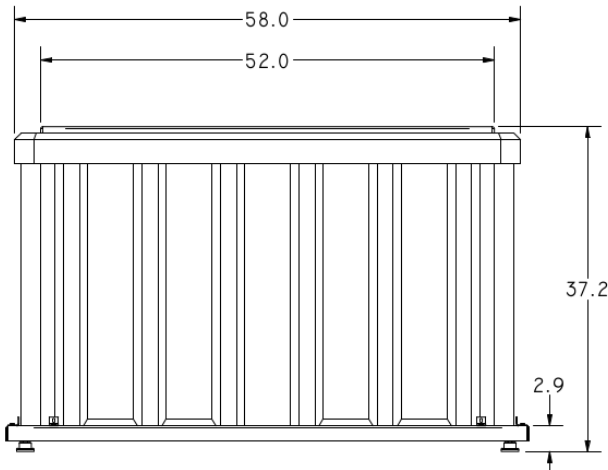
# LP-4300 TSC

## Tote Spill Containment Scale

Scale Specifications	
Accuracy	+/- 0.1% Full Scale
Safe Load	200% F.S.
Load Cells	S.S. Beam
Leveling Feet	S.S. Captive Ball
Hardware	Stainless Steel
Deck Material	C.R. Steel
Finish	Polyurethane Enamel
Cable	15 Feet
Capacity	Up to 8000 lbs

Containment Specifications	
Capacity	400 Gallons
Height	37.2 Inches
Drain	0.75"
Weight	~415 lbs
Material	Polyethylene

\*For indicator specifications, see their dedicated data sheets



[www.EagleMicrosystems.com](http://www.EagleMicrosystems.com)

Eagle Microsystems Inc. 366 Circle of Progress Pottstown, PA 19464

Telephone: 610.323.2250 800.780.8636 Fax 610.323.0114